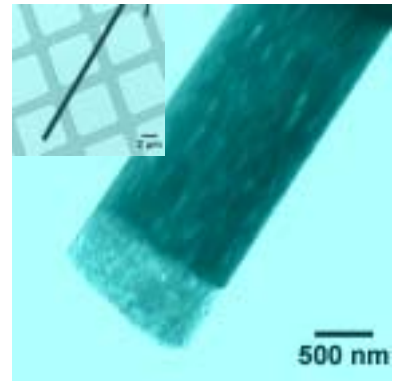
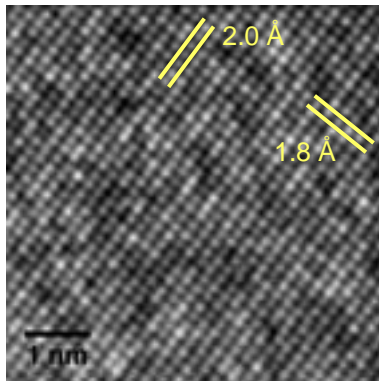
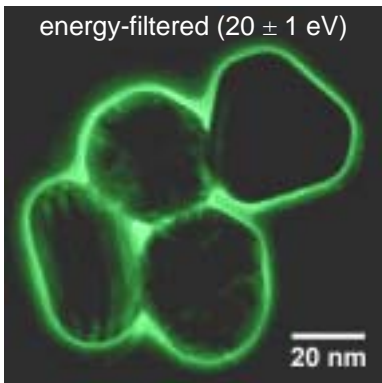
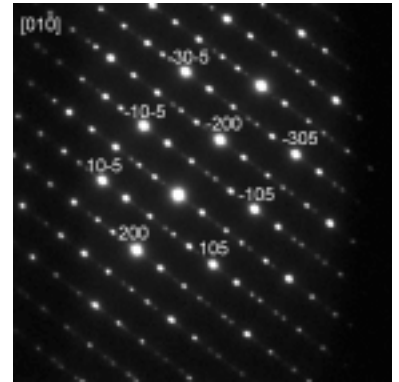
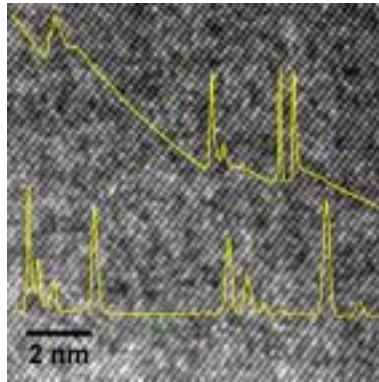
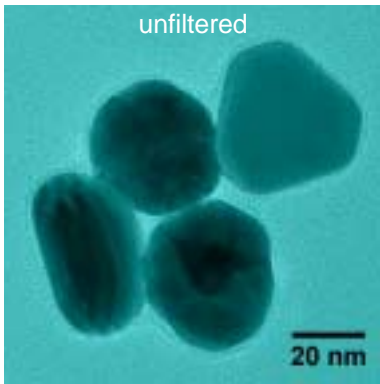


# Field-Emission Transmission Electron Microscope JEOL JEM-2100F-UHR

- Transmission Electron Microscopy (BF, DF, HRTEM)
- Scanning Transmission Electron Microscopy (STEM with BF, HAADF)
- Electron Diffraction (SAED, CBED, also energy-filtered)
- Energy-Filtered Transmission Electron Microscopy (EFTEM)
- Electron Energy Loss Spectroscopy (EELS, ELNES),  
**Gatan Imaging Filter, GIF 2001, with 1k-CCD Camera**
- Energy-Dispersive X-ray Spectroscopy (EDXS),  
**Oxford Instruments INCA 200, detection from Be on**



- Schottky field-emitter (ZrO/W(100))
- Acceleration voltage: 200 kV (160 kV)
- Point-resolution:  $\leq 0.19$  nm ( $C_s = 0.5$  mm)
- Lattice resolution in STEM:  $\leq 0.2$  nm
- Energy resolution in EELS:  $\leq 0.7$  eV



Gold conjugated with a protein

Perovskite along [012]  
( $\text{Ba}_{0.5}\text{Sr}_{0.5}\text{Fe}_{0.8}\text{Zn}_{0.2}\text{O}_{3-\delta}$ )

$\text{TiO}_{2-x}$  nanorod (anatase)  
with planar defects

**Contact:** Dr. Armin Feldhoff  
Institut für Physikalische Chemie und Elektrochemie  
Leibniz Universität Hannover  
Callinstraße 3-3 A  
D-30167 Hannover, Germany

Tel: +49-511-762-2940  
Fax: +49-511-762-19121  
[armin.feldhoff@pci.uni-hannover.de](mailto:armin.feldhoff@pci.uni-hannover.de)  
<http://www.pci.uni-hannover.de/~pci>